



INSTRUCTIONAL ROUNDS



SCHOOL MENTORING
IMPROVEMENT & COACHING

INSTRUCTIONAL ROUNDS

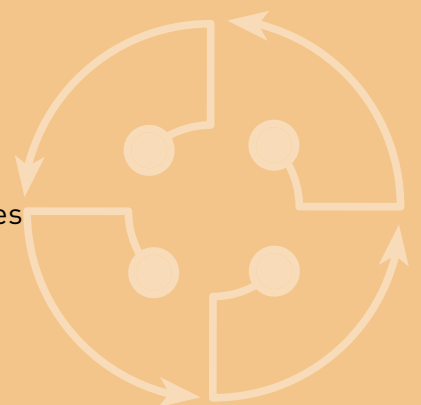
Instructional Rounds is not a separate professional learning program but rather teams of teachers learn the protocols of Instructional Rounds to build a collaborative cycle of inquiry. They plan and act together to improve student outcomes in a school focus area using evidence-informed strategies. Classroom observations are integral to the program and are focused on collecting data on student learning not teachers teaching. SCHMIC consultants have trained with the Harvard Graduate School of Education and have a deep understanding of the philosophy and protocols of Instructional Rounds. SCHMIC has been working with schools in this professional practice for over five years.

WHO: Teams of Teachers

STANDARDS: SCHMIC is an endorsed NESA provider. This suite of courses address standards 2.1.2, 5.1.2, 5.4.2, 6.2.2, 6.3.2 and 7.4.2 and contributes up to 25 hours towards the maintenance of Proficient Teacher Accreditation in NSW. The program is delivered over 12 months.

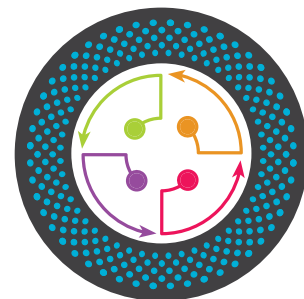
INSTRUCTIONAL ROUNDS SUPPORTS TEAMS TO:

- Further develop research knowledge
- Test evidence-informed classroom strategies
- Regularly assess their impact
- Build collective teacher efficacy





THE PROGRAM



INSTRUCTIONAL ROUNDS

INTRODUCTION TO INSTRUCTIONAL ROUNDS

- Research behind Instructional Rounds for Education
- Focus on evidence-informed practices
- Protocols of Instructional Rounds
 - PTAC - Planning, Testing, Observation, Assessment of Impact, Consolidation
 - GAP to GOT IT+
- Plan data collection and analysis

Collect and Analyse Data

1

NEXT LEVEL OF WORK ANALYSIS

- Classroom observations and data analysis
- Analyse student artefacts
- Document student progress through GAP to GOT IT +
- Assess impact of refined Theory of Action
- Refine Theory of Action and implementation plan
- Determine student artefact collection

Implement Next Level of Work

4

PLANNING FOR INSTRUCTIONAL ROUNDS

- What do we want our students to know and be able to do...via the syllabus...by when? What are the GAPS in student learning?
- Clarifying progress from GAP to GOT IT +
- Develop our Theory of Action and implementation plan
- Determine student artefact collection and analysis
- How will we know our impact? How will we measure our success?

Implement Theory of Action in Classrooms

ASSESS IMPACT AND CONSOLIDATE PRACTICES

- Classroom observations and data analysis
- Analyse student artefacts
- Assess impact of Next Level of Work and Instructional Rounds
- Plan team and/or school consolidation
- Next Steps

5

ASSESS IMPACT

- Brief observation team
- Review observation protocols
- Classroom observations and data analysis
- Assess impact of Theory of Action
- Plan the Next Level of Work

Implement Next Level of Work

3

MODEL AND COSTS

Program Delivery: The program is delivered on-site. There are whole day and 3-hour workshop options.

Program Materials: \$40 per person.

Program Costs: Contact us to discuss a model for your school. Variables include participant numbers, location and structure of program.

FOR MORE INFO CONTACT US:

Kate English | 0419 276 197
kenglish@schmicconsulting.com.au

Ann-marie Furney | 0447 434 229
afurney@schmicconsulting.com.au

WWW.SCHMICCONSULTING.COM.AU